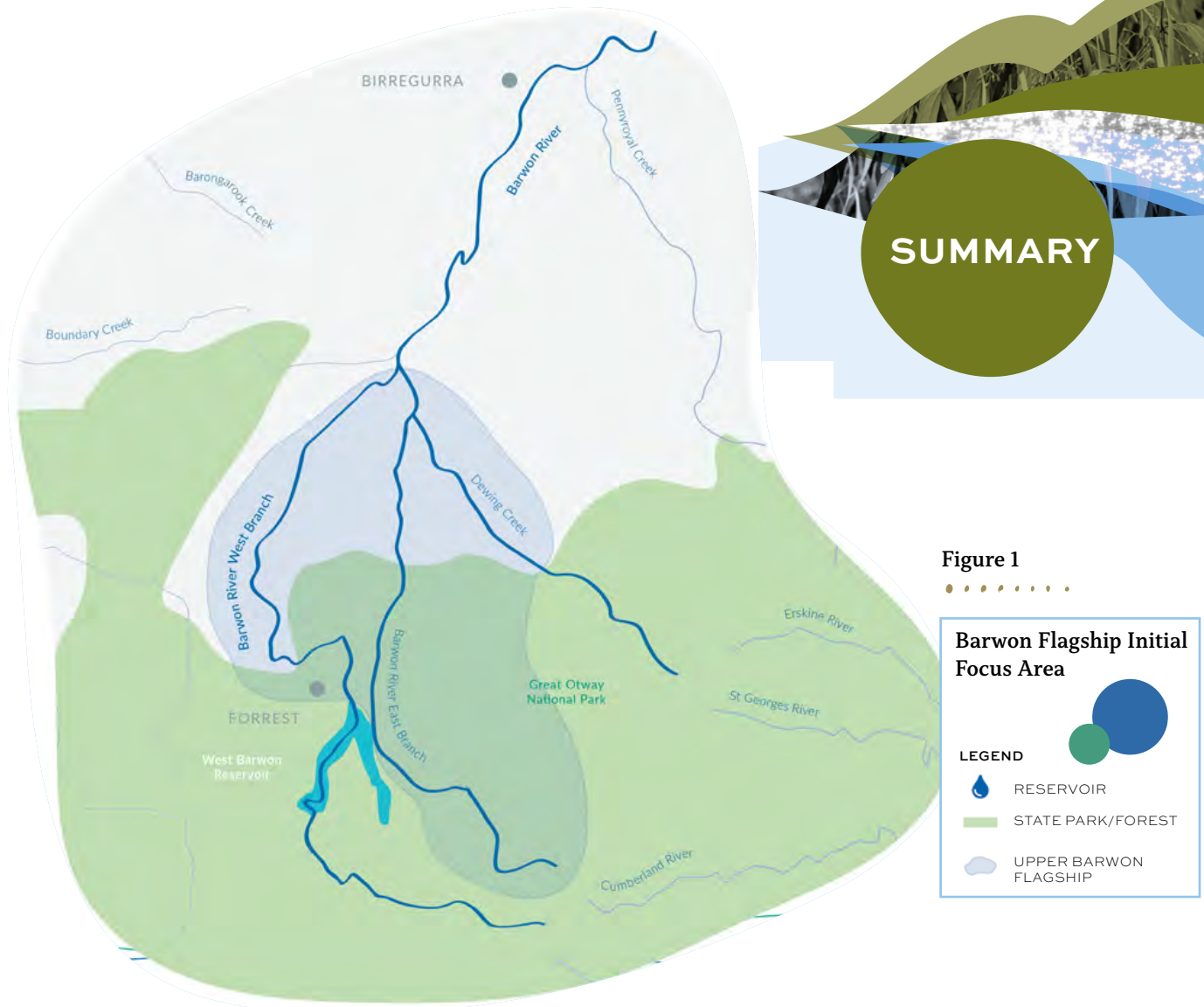


BARWON FLAGSHIP

Waterway Management Plan

SUMMARY



BARWON FLAGSHIP

The Barwon Flagship was established in June 2021. It is a series of integrated projects working towards improving the health of the Barwon River and adjoining riparian land, while promoting community involvement.

The Barwon Flagship is working with landholders over time to change existing riparian management practices, with the long-term goal of improving waterway health and enabling the delivery of an increased environmental water entitlement. It is also improving in-stream habitat for threatened native fish and supporting downstream benefits in the mid and lower Barwon River.

The focus area is the upper Barwon River as shown in Figure 1. This focus area has been prioritised due to the significant impact of willows (*Salix spp.*) and *Glyceria* (*Glyceria maxima*) causing choke points that inhibits water flow downstream.

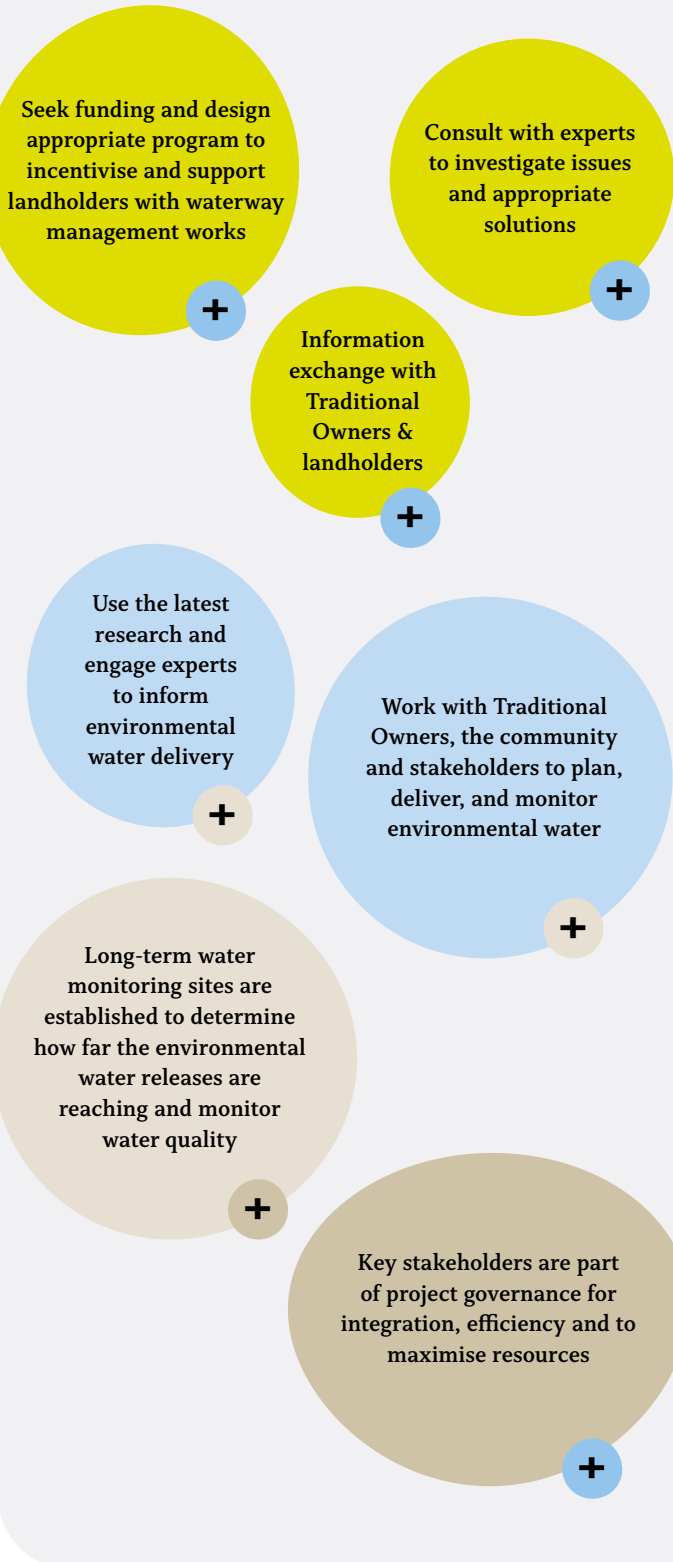
Acknowledgements

We acknowledge the Gulidjan and Gadubanud people of the Maar Nation as Traditional Owners of the land and waters of the Barwon River from its headwaters to Winchelsea. We pay respect to their elders past, present and emerging and extend this recognition and respect to the Wadawurrung People of the Kulin Nation who are the Traditional Owners where water in the Barwon River flows, downstream of Winchelsea.

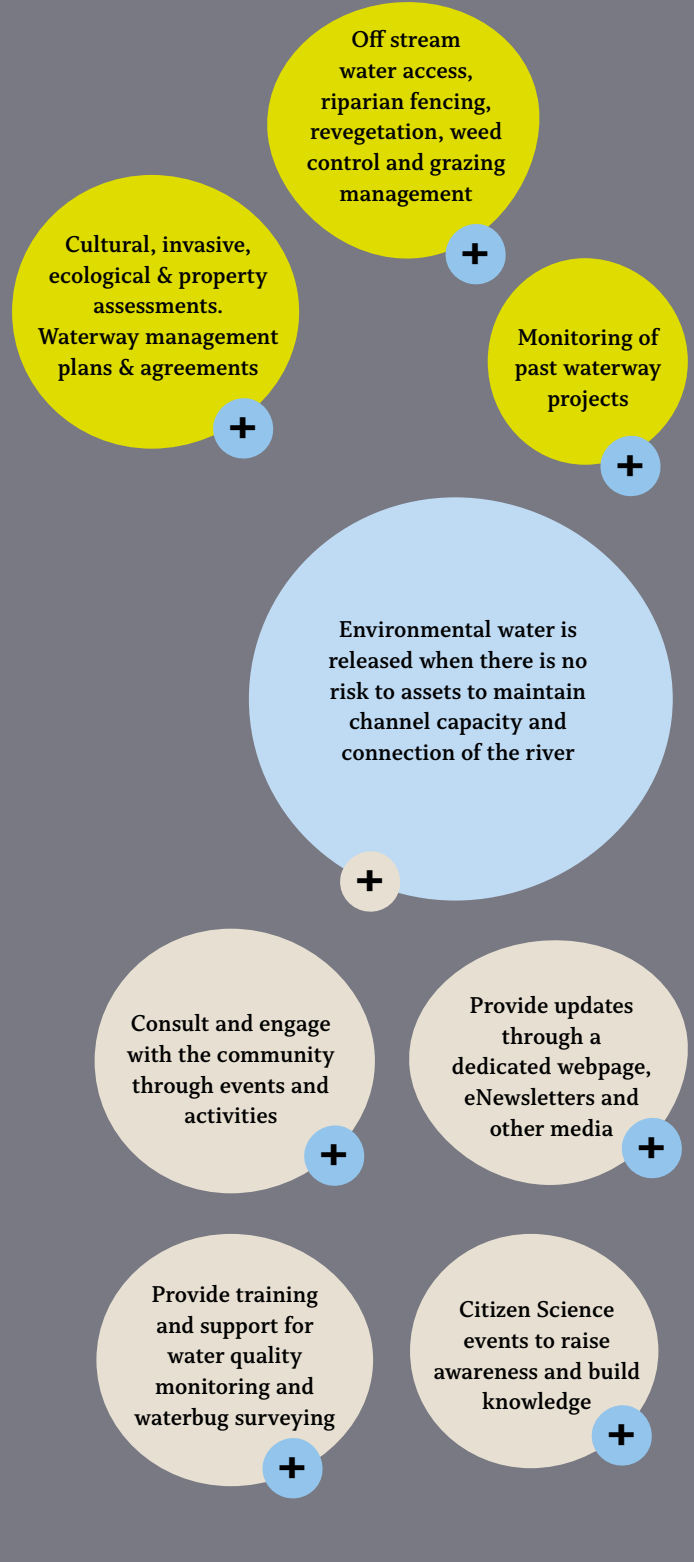
The community have been a key driver and player in the development of this plan, especially through Landcare and participation in a range of processes. We acknowledge the community's key role in enabling its development and implementation.

THE PATHWAY

ENABLING ACTIVITIES



ACTIONS



PROJECT TIMELINE



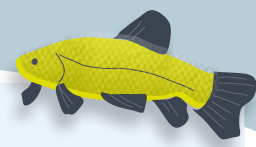
TARGET SETTING 2022/2023

Prioritisation and planning, monitoring for benchmark assessment and community engagement processes.

TA

On ground work flow. Activities





OBJECTIVES

EFFECTIVE
RIPARIAN
MANAGEMENT

HEALTHY
RIVER FLOW

COMMUNITY
STEWARDSHIP

THRIVING ECOLOGY

VISION

By 2050, through working together to apply effective riparian management, sufficient environmental flow regimes will have been returned to the upper reaches of the Barwon River.

This will enable the river to support healthy, native vegetation and biodiversity, both instream and along its banks and provide habitat to a range of important local species, including platypus, native fish, and invertebrates, as well as providing benefit to downstream reaches.

The Upper Barwon's many values will be appreciated, enjoyed, and cared for by landholders, Traditional Owners, citizen scientists and recreational users.

Visit: ccma.vic.gov.au/projects/barwon-flagship-waterway/ for the full Barwon Flagship Waterway Management Plan

PLANNING ACTION 2022 - 2040

Plans to improve condition and increase environmental flows are focused on review and adapting existing plans.

RECOVERY & GROWTH 2040 - 2050

Focus is on maintenance activities including weed control, revegetation, and monitoring of project sites.

VISION ENABLED 2050

Management activities include maintenance after extreme events.



COMMUNICATING PROGRESS

Community and stakeholders will be kept informed via a regular targeted news and the dedicated webpage ccma.vic.gov.au/projects/barwon-flagship-waterway/

Each year a summary of progress, a calendar of events and a calendar of works for the Barwon Flagship will be published and promoted.

ROLES & RESPONSIBILITIES

CORANGAMITE CMA

The Corangamite CMA is responsible for leading the Barwon Flagship program and to support stakeholders to integrate activities and knowledge sharing. The Corangamite CMA coordinates delivery of the environmental water entitlement, floodplain management, citizen science programs, and waterway protection works.



BARWON WATER

Within the Upper Barwon Flagship region, Barwon Water are the delegated manager of Crown land along a section of the Barwon River East Branch and have land management responsibilities around West Barwon Reservoir, Callahan's Creek and Dewing Creek. They support ongoing land and asset management activities. The West Barwon Reservoir is managed by Barwon Water and plays a key role in their water supply network as well as facilitating the release of environmental water, passing and natural flows from the Reservoir.



UPPER BARWON LANDCARE NETWORK

The Upper Barwon Landcare Network play a key role in education and capacity building of the community, enabling landholders to undertake riparian works within the project area and supporting citizen science activities.



LAND MANAGERS

The Catchment and Land Protection Act is the key guiding legislation for the management of land in Victoria. Under the Act all landowners (managers) have a duty of care to avoid damage, conserve soil, protect water resources and manage weeds.



EASTERN MAAR TRADITIONAL OWNERS

The Gulidjan and Gadabanud people of the Maar nation are the Traditional Owners from the headwaters of the Barwon to Winchelsea. Eastern Maar Aboriginal Corporation (EMAC) is the professional organisation that represents the Eastern Maar People of South West Victoria and manages their Native Title rights and Interests. They are the primary guardians, keepers, and knowledge holders of Aboriginal cultural heritage.



WADAWURRUNG TRADITIONAL OWNERS

The Barwon River flows through Wadawurrung country from Winchelsea to the sea. The Wadawurrung Traditional Owners Aboriginal Corporation (WTOAC) is the Registered Aboriginal Party (RAP) for Wadawurrung country. With the statutory authority for the management of Aboriginal heritage values and culture, under the *Victorian Aboriginal Heritage Act, 2006*.