

Actions & Achievements 2022 SUMMARY

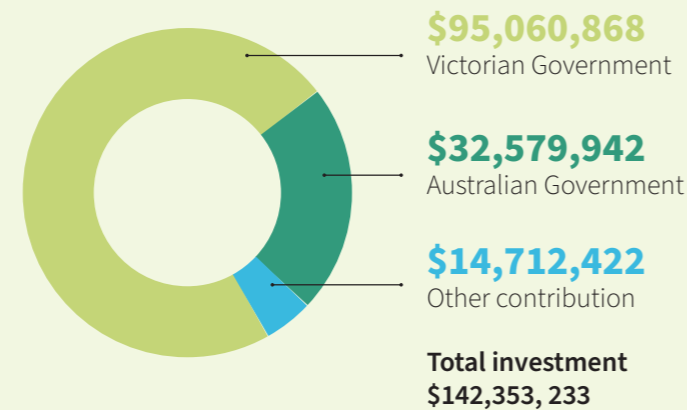
Victorian CMAs employed
437 staff
2021-22



Statewide investment 2021-22

The Victorian Government contributed 67% of CMAs total funding totalling over \$95 million

The Australian Government contributed 23% of CMAs total funding totalling over \$32 million dollars



“We have achieved great outcomes for our natural environments, agricultural landscapes and communities in our 25 years, and we are only just getting started.”

Peter Hilbig
Chair Vic Catchments



PO Box 479, Horsham VIC 3402
T: 5382 9918
W: www.viccatchments.com.au

CMAs support Traditional Owner Self Determination

10/10 CMA regions work closely with their local TOs in supporting self determination



Acknowledgement of Victoria's Aboriginal communities

The Victorian Catchment Management Authorities acknowledge Victoria's Aboriginal community and their rich culture and pay respect to their Elders past, present and emerging. / We acknowledge Aboriginal people as Australia's first peoples and as the Traditional Owners and custodians of the land, water and biodiversity on which we rely. / We recognise and value the ongoing contribution of Aboriginal people and communities to Victorian life and how this enriches us. We embrace the spirit of reconciliation, working towards the equality of outcomes and ensuring an equal voice.

Projects featured were supported by Victoria's 10 CMAs, the community and a range of partners through funding from the Australian Government's National Landcare Program and the Victorian Government.



Celebrating
25
years of CMAs



Regional Actions and Achievements 2021-22

MALLEE

- ▶ 198,000 hectares of targeted environmental works were completed to protect the region's priority natural, cultural and productive landscapes.
- ▶ Established and maintained 53 management agreements with land managers to deliver targeted Natural Resource Management activities.
- ▶ Supported 6,900 stakeholders to participate in 24 delivery partner forums with 98% of participants rating their overall delivery as 'good' or 'excellent'.

WIMMERA

- ▶ Discovered three new juvenile platypuses and one sub-adult in a stretch of the MacKenzie River, in the Gariwerd (Grampians) National Park.
- ▶ Coordinated a range of professional development opportunities to support Aboriginal staff as future leaders in catchment management.
- ▶ Supported farmers to install a Wimmera wide network of soil moisture probes and weather stations, at 72 sites, under the Australian Government's Future Drought Fund.

GLENELG HOPKINS

- ▶ Launched the Rivers of Warrnambool Flagship Waterway Project to protect and rehabilitate natural values of the Hopkins and Merri rivers.
- ▶ Established 12 landholder agreements through Coastal Connections to improve 91 hectares of Australasian Bittern habitat.
- ▶ Launched Future Ready Regions Drought Storyboard website to help farmers plan for climate change.

CORANGAMITE

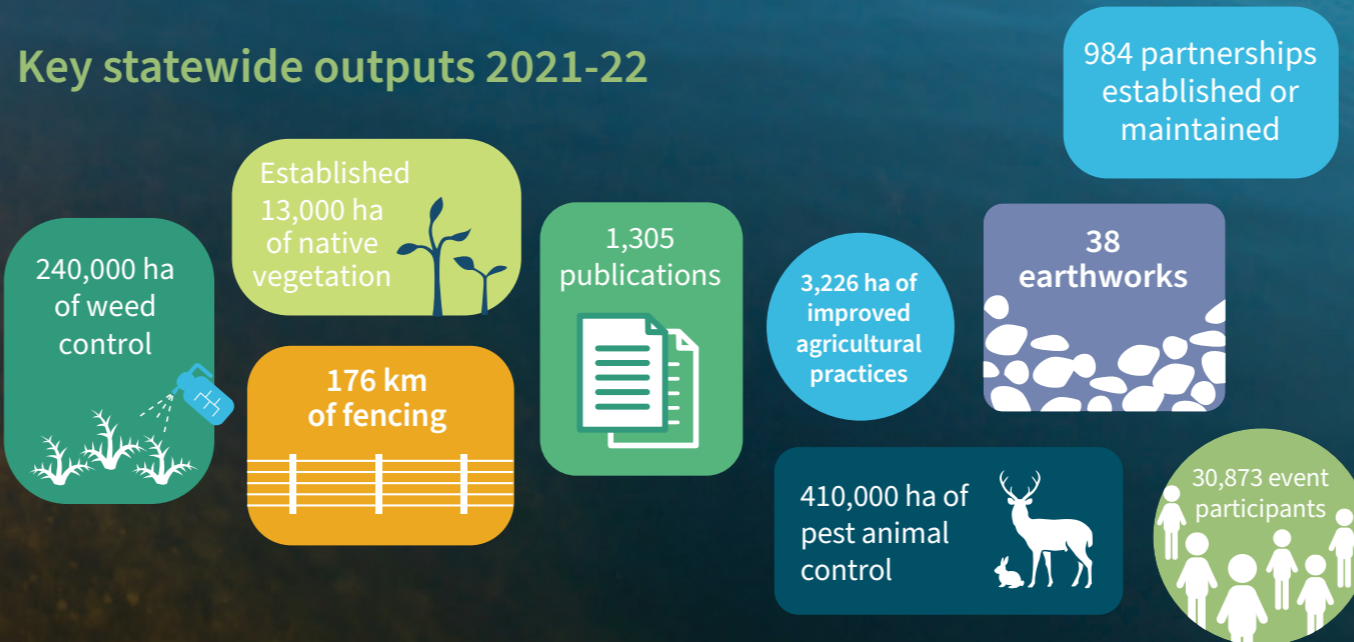
- ▶ Renewed the Corangamite Catchment Partnership Agreement with 19 regional partners.
- ▶ Launched the Kitjarra-dja-bul Bullarto Langi-ut project in partnership with the Wadawurrung and land managers to deliver a master plan for the Barwon River corridor.
- ▶ Took action on climate change as a leading Natural Resource Management organisation to commit to reaching net zero emissions by 2024.

PORT PHILLIP & WESTERNPORT

- ▶ In January 2022, Port Phillip & Westernport Catchment Management Authority integrated into Melbourne Water. Melbourne Water is now the CMA for the Port Phillip & Westernport region.
- ▶ The new team finalised the draft Regional Catchment Strategy with more than 100 partner organisations signed on to support its delivery.



Key statewide outputs 2021-22



NORTH CENTRAL

- ▶ Delivered 98 gigalitres of water for the environment to several Ramsar listed wetlands, floodplains and major systems of the Campaspe and Loddon rivers.
- ▶ Secured non-traditional funding of \$713,000 from the Agnico Eagle Group to continue the statewide school-based River Detectives Program for the next three years.
- ▶ Constructed two new fishways at Cohuna and Koondrook Weirs to connect 140 kilometres of prime fish habitat in Gunbower Creek with 530 kilometres of open Murray River.

GOULBURN BROKEN

- ▶ Completed the *Ribbons of Blue Sashes of Green* project creating 500 hectares of wildlife corridors along creeks, through paddocks and around dams.
- ▶ Confirmed the call of the EPBC-listed Sloane's Froglet at Moodie Swamp for the first time, after delivering 1,000 megalitres of water for the environment.
- ▶ The enduring Partnership Team Forum, that brings together key stakeholders to address natural resource management priorities in the catchment, celebrated its 250th meeting.

NORTH EAST

- ▶ Implemented the Embedding Climate Adaptation in Agriculture program which demonstrates how leading farmers are managing the risks of climate change.
- ▶ Partnered with local Landcare and primary schools to deliver the Upper Ovens Flagship Project –to treat invasive weeds and plant 1,000 plants.
- ▶ King River – Caring for Country program delivered water for the environment partnering with Taungurung Land and Waters Council, Victorian Environmental Water Holder and landholders.

EAST GIPPSLAND

- ▶ Supported landholders through the challenges of floods by stabilising eroded banks, re-constructing fencing and clearing fence lines.
- ▶ The renewed Gippsland Lakes Coordinating Committee allocated funding to partner agencies and community groups to deliver collaborative projects across the catchment.
- ▶ Strengthened partnerships with local Angling Clubs and installed 50 fish habitat structures in the Snowy River.

WEST GIPPSLAND

- ▶ Completed over 1,247 hectares of weed control and fenced more than 14 kilometres of priority waterways for catchment health.
- ▶ Stabilised riverbeds and banks at 44 sites across the catchment as part of the ongoing flood recovery program.
- ▶ Completed 22 hectares of revegetation and protected an additional 22 hectares of remnant habitat for wildlife and to improve biodiversity.