

Native Grasslands on Roadsides The Linear Reserves Project

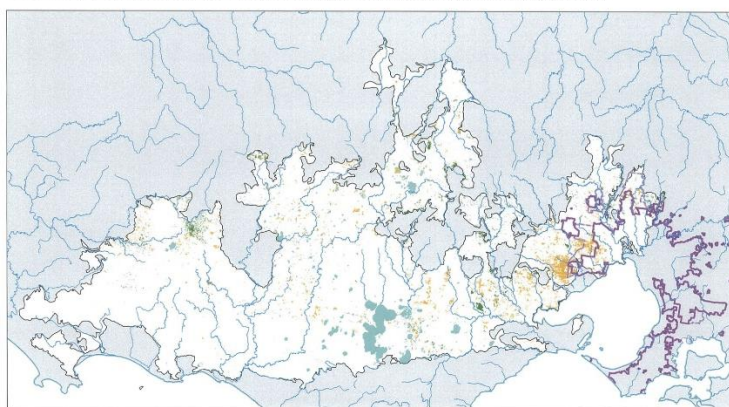


The Department of Environment, Land, Water and Planning (DELWP) manage the Linear Reserves Project with support from a wide range of agencies and stakeholders including CFA, Catchment Management Authorities, Local Government Authorities, Regional Roads Victoria, Rail Authorities, and Traditional Owners.

The project commenced in 2014 and aims to enhance the condition and resilience of native grasslands and associated flora and fauna species through weed control and prescribed burning.

The Natural Temperate Grasslands of the Victorian Volcanic Plain were once widespread and common in this region. Today they are critically endangered, less than 1% of their original extent remains, and are protected by Federal and State Government legislation. They are also home to many unique and threatened plants and animals, many of which are found nowhere else in the world let alone Australia.

Modelled map of current extent of two EPBC listed communities within the Victorian Volcanic Plain bioregion



Current extent of Native Grasslands indicated in yellow, Grassy Woodland in green.

Some of the best areas of remnant native grassland vegetation remaining are restricted to narrow strips of public land on roadsides such as those adjacent to your property. The Linear Reserves Project engages specialist weed control contractors with grasslands experience to selectively spray high threat weeds within these road reserves. We also look to coordinate works to follow recent burns by local CFA to maximise weed control effectiveness.



Featherheads and Chocolate Lilies



Native herb, Blue Devil

Native Grasslands on Roadsides The Linear Reserves Project



Specialists Weed Control contractors controlling pasture grasses in roadside grassland reserves.

You might see our Project Officers or Spraying Contractors working on the roadside near your property.



Basalt Rustyhood Orchid.

Some of the threatened species in grasslands exist in just one known population making them highly vulnerable.

This project is supported by the Glenelg Hopkins and Corangamite Catchment Management Authorities through funding from the Australian Government's National Landcare Program and the State Government's Biodiversity Response Planning and Biodiversity on Ground Actions funding programs.



Blue Pincushion



Significant Native Vegetation signage

For more information contact DELWP,
Ammie Jackson – Ph 0427 682 348
ammie.jackson@delwp.vic.gov.au

© The State of Victoria Department of Environment, Land, Water and Planning 2020



This work is licensed under a Creative Commons Attribution 4.0 International licence. You are free to re-use the work under that licence, on the condition that you credit the State of Victoria as author. The licence does not apply to any images, photographs or branding, including the Victorian Coat of Arms, the Victorian Government logo and the Department of Environment, Land, Water and Planning (DELWP) logo. To view a copy of this licence, visit <http://creativecommons.org/licenses/by/4.0/>

Disclaimer

This publication may be of assistance to you but the State of Victoria and its employees do not guarantee that the publication is without flaw of any kind or is wholly appropriate for your particular purposes and therefore disclaims all liability for any error, loss or other consequence which may arise from you relying on any information in this publication.

Accessibility

If you would like to receive this publication in an alternative format, please telephone the DELWP Customer Service Centre on 136186, email customer.service@delwp.vic.gov.au, or via the National Relay Service on 133 677 www.relayservice.com.au. This document is also available on the internet at www.delwp.vic.gov.au.