

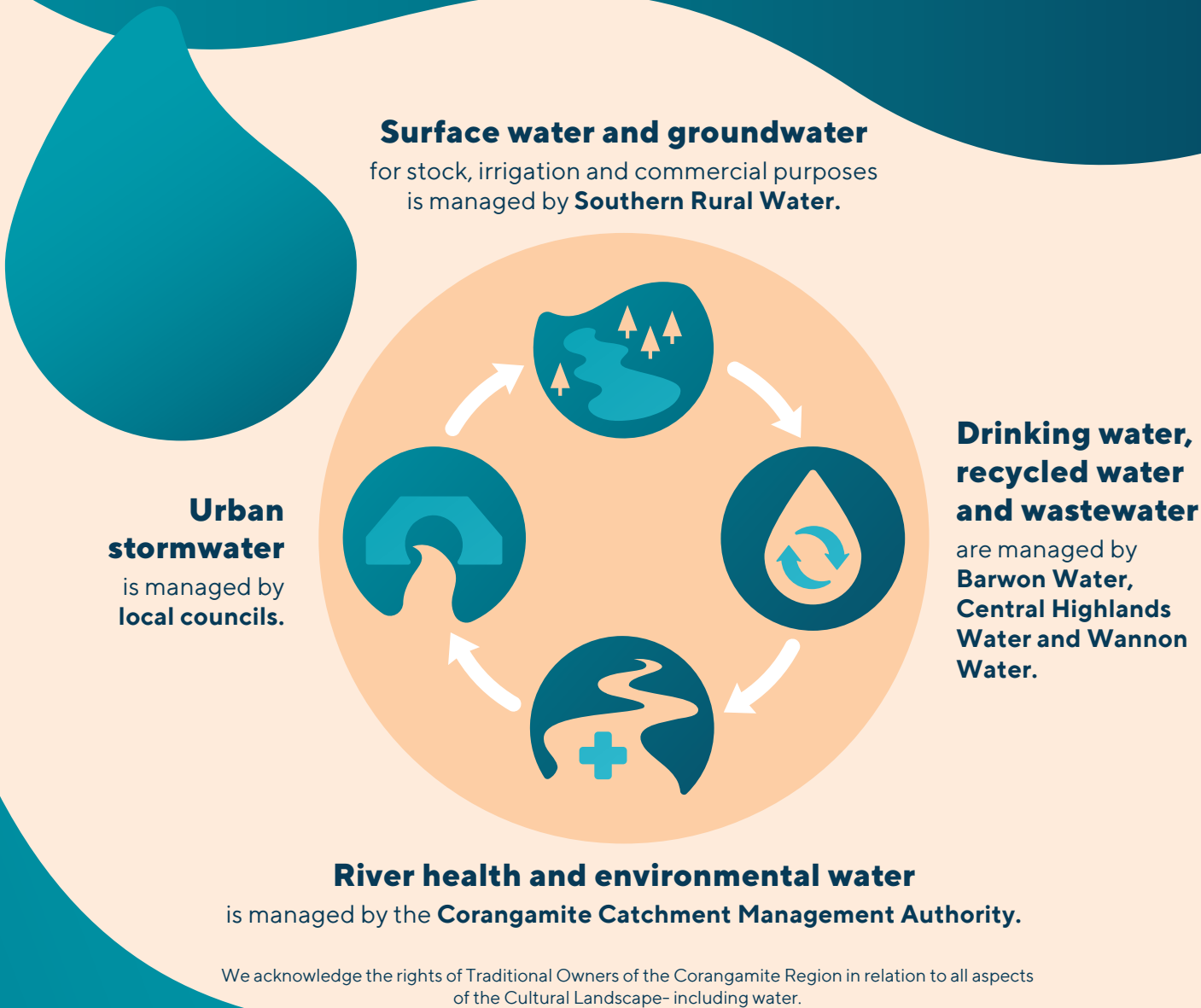
Who's looking after your water?

Activity	Urban Water authorities	Corangamite CMA	Local Councils	Southern Rural Water
Store untreated water in reservoirs*	✓			
Manage urban drinking water, including treatment, monitoring and delivery to homes*	✓			
Manage reticulated sewerage systems**	✓			
Disposal of treated sewerage, supply of recycled water	✓			
Manage urban stormwater			✓	
Manage, monitor and issue licences to take and use water from waterways, aquifers, dams and bores for domestic and stock, irrigation or commercial purposes				✓
Authorise the construction of new farm dams and bores				✓
Meter the licensed use of water from waterways, aquifers, dams and bores				✓
Assess and manage applications for temporary or permanent transfer of water used on a farm				✓
Implement the Victorian Government's surface water and groundwater management plans				✓
Monitor river flows	✓	✓		✓
Monitor and report on water quality***	✓	✓	✓	
Manage river health		✓		
Manage drinking water catchment areas*	✓	✓		
Manage floodplains and rural drainage schemes (Lough Calvert and Woody Yaloak)		✓		
Manage and deliver water for the environment		✓		
Issue permits for works on waterways		✓		
Enhance streamside areas (fencing, revegetation, salinity and erosion control)		✓		

*SRW does not have this responsibility in the Corangamite region but does elsewhere in Southern Victoria.
 **Onsite (domestic) sewerage is the responsibility of local councils.
 ***Agencies monitor and report on water quality for a range of purposes. Blue green algae outbreaks are managed locally by the land manager adjacent to the waterway. Contact your local water authority for more information.
 *** The EPA has accountability for investigating water quality issues.

Who manages water in the Corangamite region?

Five key agencies work together to manage water resources in the Corangamite region. Sometimes their boundaries overlap, but each organisation has a different role and provides different services to the community.



Catchment Management

The Corangamite CMA is responsible for managing catchment and waterway improvement programs and identifying regional priorities for natural resource management funding. This work is undertaken in collaboration with the community. The Corangamite CMA region covers 13,340 square kilometres of south-west Victoria and includes 175 kilometres of coastal fringe. The Corangamite CMA is based in Colac and also has an office in Geelong.

www.ccma.vic.gov.au

Urban Water

Barwon Water, Central Highlands Water and Wannon Water are the water authorities in the Corangamite region responsible for sourcing and treating water supplied to customers' homes and businesses and managing and treating their wastewater.



Stormwater

Any rain that falls on roofs or collects on paved areas such as driveways, roads and footpaths is known as stormwater. It flows along kerbs and through drains and eventually ends up in our waterways, taking things such as sediment, leaves, silt, oils, chemicals and rubbish with it.

You can help reduce the amount of pollution entering our rivers by composting garden waste, disposing of pet droppings in the bin, and not hosing or sweeping litter into the kerb.

It's also important not to litter, as things that get washed into our bays and oceans via the stormwater system can take a long time to break down. For instance, cigarette butts take one to five years to break down. A plastic bag can take 10-20 years, and plastic and glass bottles can hang around forever!

The urban stormwater network is the responsibility of local councils.



CENTRAL HIGHLANDS WATER

Central Highlands Water services a large geographical region of 9,275 square kilometres and manages 15 distinct water supply systems and 13 wastewater systems. They provide water supply and sewerage services to 149,842 residents throughout the Central Highlands region.

www.chw.net.au

BARWON WATER

Barwon Water is Victoria's largest regional urban water corporation. It services a population of more than 320,000 people, which rises to more than 545,000 people in peak periods. Their head office is located in Geelong and they have a shared customer service centre with Corangamite CMA in Colac.

www.barwonwater.vic.gov.au



Rural Water

Southern Rural Water

Southern Rural Water manages irrigation districts and major storages, and licenses river diverters, groundwater and private dams across southern Victoria, an area of 88,000 km². They deliver water for farms, rural and urban businesses, electricity generation, raw water for urban water corporations, and support regional catchment and environmental water strategies.

www.srw.com.au

Central Highlands Water

Barwon Water

Wannon Water

WANNON WATER

Wannon Water serves a population of more than 100,000 in south-west Victoria, including the major centres of Warrnambool, Portland and Hamilton where customer service centres are located. Wannon Water supplies water to 34 towns from a diverse range of sources, and provides sewerage services to 16 towns.

www.wannonwater.com.au

CORANGAMITE CMA REGION

SOUTHERN RURAL WATER

